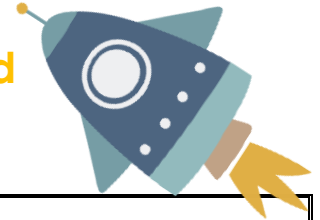




DR. GILBERT L. PORTER ELEMENTARY SCHOOL

2024 - 2025 Annual Program

Monthly online Payment Date Range and Monthly Service Periods



Monthly online "Purchase & Pay." Date Ranges ↓	Monthly Service Periods ↓	Number of Live Service Days Within This Service Period	Per Student Fee for Each Service Period and Program			
			Before School Program \$6.00 Rate MTWTF	STORY HOUR PROGRAM STORY HOUR \$6.00 RATE MTWTF 5 DAYS	AFTER SCHOOL PROGRAM REGULAR \$11.00 RATE MTWTF	AFTER SCHOOL PROGRAM REGULAR \$12.00 RATE MTWTF

Monday, Aug. 12 – 14	August	12	72.00	72.00	132.00	144.00
Monday, Aug. 26 – 30	September	20	120.00	120.00	220.00	240.00
Monday, Sep. 23 – 30	October	22	132.00	132.00	242.00	264.00
Monday, Oct. 21 – 31	November	14	84.00	84.00	154.00	168.00
Monday, Nov. 18 – Dec. 1	December	14	84.00	84.00	154.00	168.00
Monday, Dec. 23 – Jan. 5	January	18	108.00	108.00	198.00	216.00
Monday, Jan. 20 – 31	February	19	114.00	114.00	209.00	228.00
Monday, Feb. 17 – 28	March	15	90.00	90.00	165.00	180.00
Monday, Mar. 24 – 31	April	21	126.00	126.00	231.00	252.00
Monday, Apr. 21 – 30	May-June	25	150.00	150.00	275.00	300.00

11 Service Periods 180 Service Days	<p>FOCUS APP "Purchase and Pay" option is blocked once the program service period goes live. If this occurs, please call your site Program Manager</p>
--	---